

## FEATURES

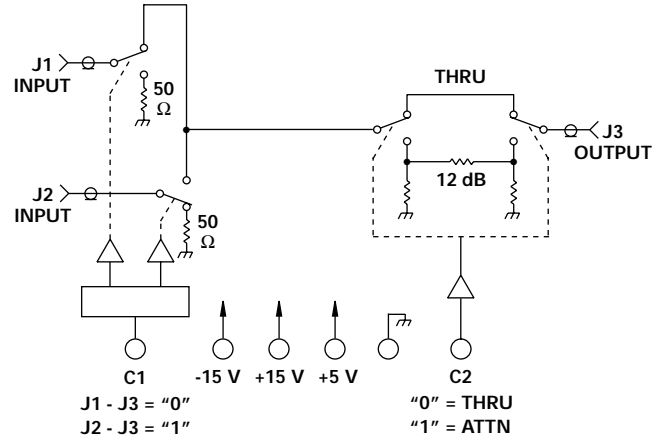
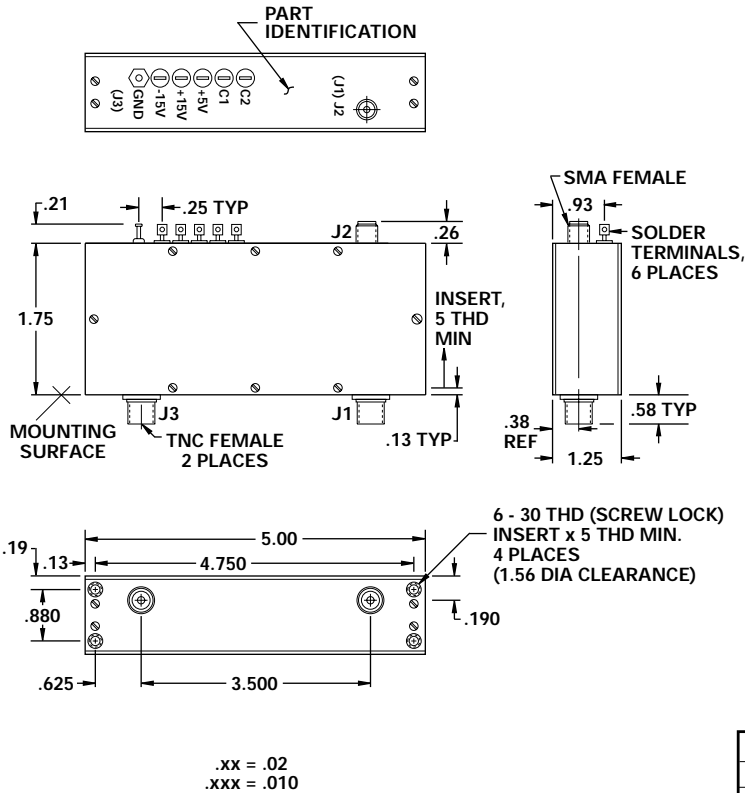
- 0.1 - 30 MHz
- 0.2 dB Amplitude Balance
- 0.5 DEG Phase Balance
- -115 dBm Switching Transients



MODEL NO.  
DSWA9072

Switch SP2T

HDI



## GUARANTEED PERFORMANCE

Parameter	Min	Typ	Max	Units	Conditions	
Operating Frequency	0.1		30	MHz		
DC Current		2.2 14 2	10 30 5	mA	At +5 VDC Supply At +15 VDC Supply At -15 VDC Supply	
Control Type	C1 C2	TTL			"0" = J3 - J1, "1" = J3 - J2 "0" = Thru, "1" = Attn	
Control Current	High Low	±20 ±200	±40 ±400	µA	V <sub>IH</sub> = +2.7 V V <sub>IL</sub> = +0.5 V	
Amplitude Balance		±0.15	±0.2	dB		
Phase Balance		±0.5	±1.0	DEG		
Attenuation vs. Phase		±0.5	±1.0	DEG		
Insertion Loss		0.9	1.5	dB		
Isolation		65	75	dB		
VSWR	Thru Termination	1.3/1 1.3/1	1.5/1 1.5/1			
Impedance		50		OHMS		
Switching Speed		120	300	µSec	50% TTL to 90% / 10% RF	
Transition (Rise/Fall) Time				µSec	10% / 90% or 90% / 10% RF	
Switching (Video) Transients		-115	-90	dBm	3 kHz Bandwidth 1 µSec On, 10 µSec Off	
Intercept Points	2nd 3rd	+70 +40	+81 +45	dBm		
RF Power	Operate No Damage	+19 +24	+17 +21 +27	dBm	0.1 - 1 MHz 0.1 dB Comp. 1 - 30 MHz 0.1 dB Comp.	
Operating Temperature		-55	+25	+85	°C	TA

