

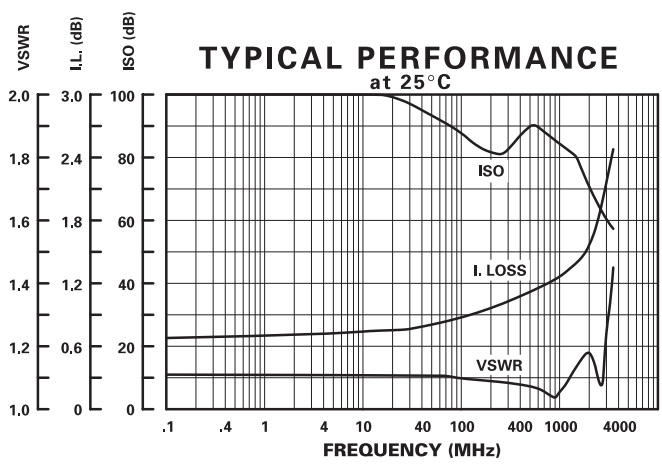
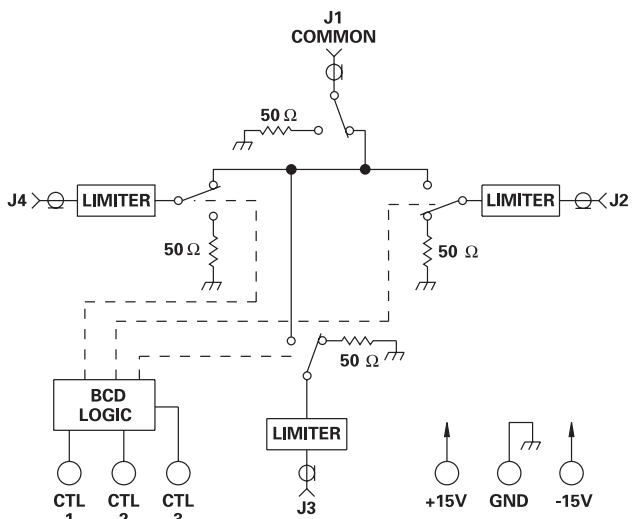
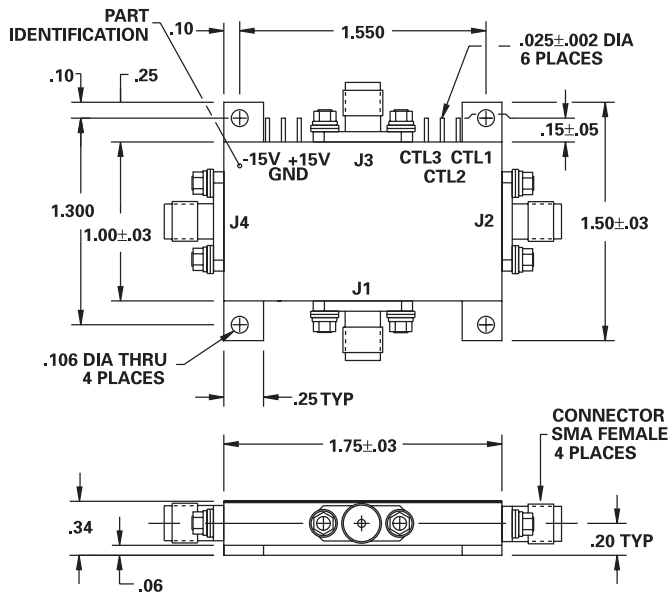
# MODEL NUMBER DSW36200

# GaAs SP3T

## FEATURES

- .1-2000 MHz
- High Power Limiting

## SP3T



LOGIC TABLE

CTL 3	CTL 2	CTL 1	J1 COMMON TO
0	0	0	ALL OFF
1	0	1	J2
1	1	0	J3
1	1	1	J4

## GUARANTEED PERFORMANCE

Parameter	Min	Typ	Max	Units	Conditions
Operating Frequency	0.1		2000	MHz	
DC Current		11	25	mA	At +15 VDC Supply
		10	20	mA	At -15 VDC Supply
Control Type		TTL			See Logic Table
Control Current	High	±10	±100	µA	V <sub>IH</sub> = +2.7V
	Low	±10	±100	µA	V <sub>IL</sub> = +0.5V
Isolation	60	70		dB	
Insertion Loss		2	3	dB	
VSWR	Thru	1.3/1	1.5/1		
	Termination	1.3/1			
Impedance		50		OHMS	
Switching Speed		.07	5	µSEC	50% TTL to 90% / 10% RF
Transition (Rise/Fall) Time		16		nSEC	10% / 90% or 90% / 10% RF
Switching (Video) Transients		37		mV	Peak Value
Intercept Points	2nd	+65		dBm	70 MHz / 50 MHz
	3rd	+34		dBm	35 MHz / 50 MHz
RF Power	Operate	11	-10	dBm	Min 1 dB Compression
	No Damage		+30	dBm	CW
	1 µSEC Pulse Width		+30	dBm	< 1 MHz
	(0.1% Duty Cycle At J2, J3 And J4 Only)		+40	dBm	10 MHz
			+50	dBm	100 MHz - 18GHz
Operating Temperature	-55	+25	+125	°C	TA