

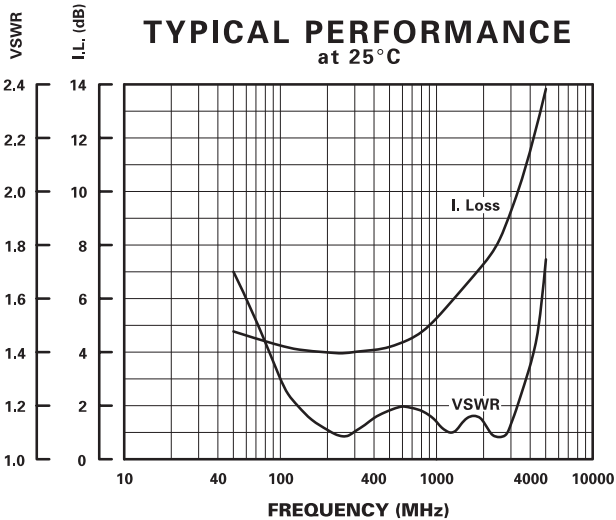
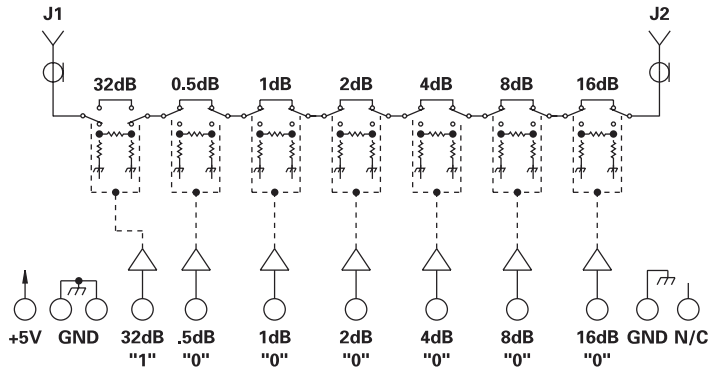
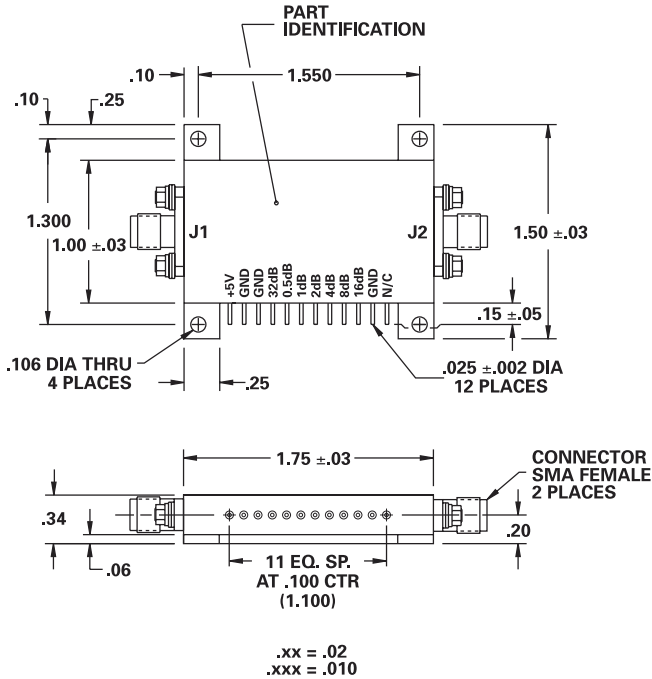
# MODEL NUMBER DAT76227

# Attenuator 7 Section

## FEATURES

- 1700 - 2000 MHz
- 0.5 dB LSB
- SMA Female Connectors

## 7 BIT



## GUARANTEED PERFORMANCE

Parameter	Min	Typ	Max	Units	Conditions
Operating Frequency	1700		2000	MHz	
DC Current		10	15	mA	At +5 VDC Supply
Control Type		TTL			7 Line Logic "1" = Attenuation
Control Current	High Low		±10 ±10	µA	V <sub>IH</sub> = +2.7 V V <sub>IL</sub> = +0.5 V
Insertion Loss		7	9	dB	
Attenuation	LSB Range Accuracy	0.5	63.5	dB	0.5, 1, 2, 4, 8, 16, 32 dB ±(0.25dB +2% of Attenuation Setting in dB)
VSWR		1.2/1	1.6/1		
Impedance		50		OHMS	
Switching Speed		1.1	1.5	µSec	50% TTL to 90% / 10% RF
Transition (Rise/Fall) Time		0.8		µSec	10% / 90% or 90% / 10% RF
Switching (Video) Transients		85		mV	Peak Value
Intercept Points	2nd 3rd	+60 +25	+68 +29	dBm	1700 MHz / 900 MHz 850 MHz / 900 MHz
RF Power	Operate No Damage	+11	+10 +20	dBm	0.1 dB Compression
Operating Temperature	-55	+25	+125	°C	TA