



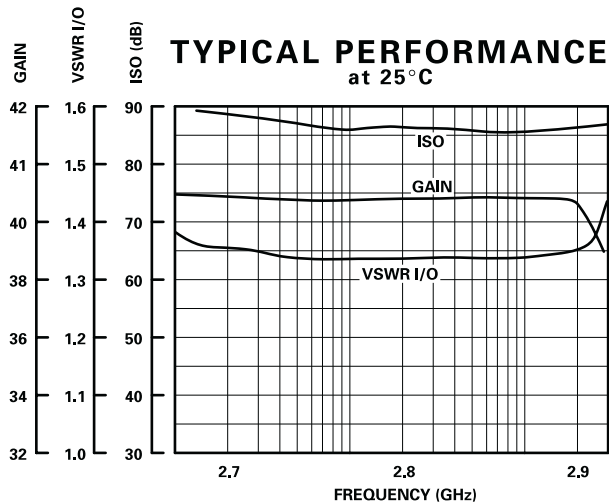
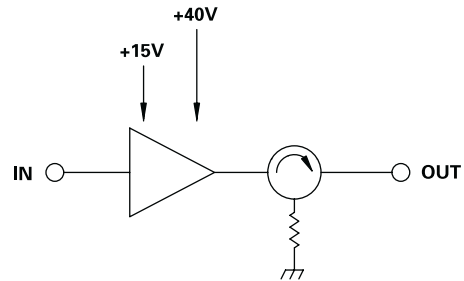
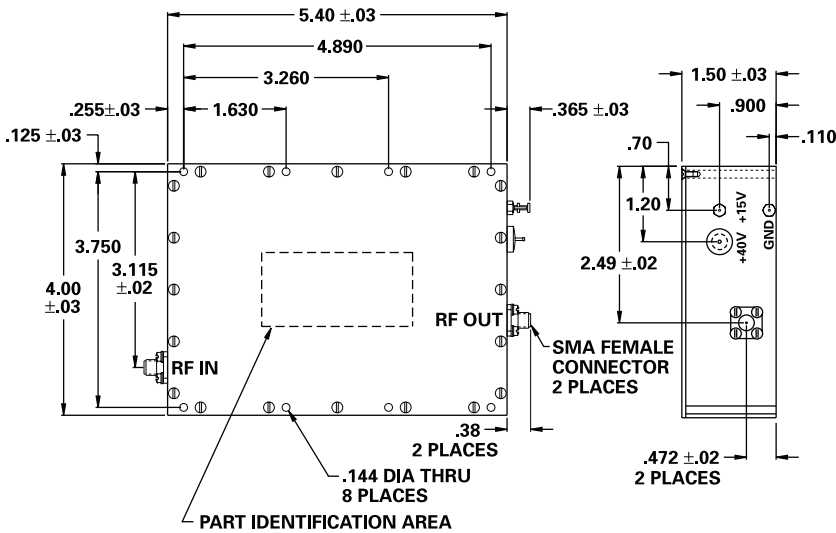
MODEL NUMBER DAMD9227

25W Power Output Amplifier

FEATURES

- 2700-2900 MHz
- 40 dBm Gain
- 25 Watt Power Output
- Amplitude Droop 0.13 dB
- Fully Protected VSWR infinite:1 any Phase

AMP



GUARANTEED PERFORMANCE

Parameter	Min	Typ	Max	Units	Conditions
Operating Frequency	2.7		2.9	GHz	
RF Power P _{IN}	+3		+15	dBm	
RF Out, P _{1dB} Comp	42.8	43.5	45.3	dBm	
Duty Cycle			12	%	
Gain		40		dBm	
Pulse Width			135	μSec	
Amplitude Droop			0.2	dB	
Phase Tracking Between			10	DEG	RMS
Input / Output VSWR		1.3/1	1.5/1		In 50 Ohm System
Pulse-to-Pulse Stability	-0.05		+0.05	DEG	
Efficiency		40		%	On 40V Supply
DC Voltage		1.3	3.5	A	At +15 VDC
		0.2	0.6	A	At +40 VDC (Average Current)
Package					5.4" X 4.00" X 1.50" with SMA Female Connector, Voltage and GND Pins per LM Drawing
Environment	Moisture	5	95	%	Relative Humidity, Non-Condensing Operation and Non-Operation
	Altitude	-1,000	+10,000	Ft	
Operating Temperature		0	+50	°C	TA
			-40	+70	°C