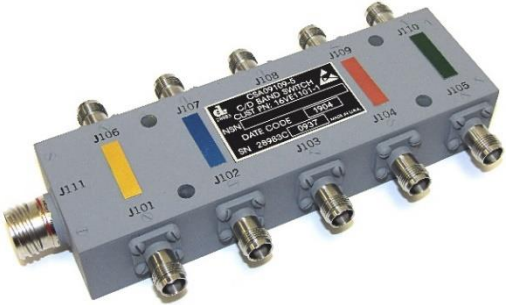


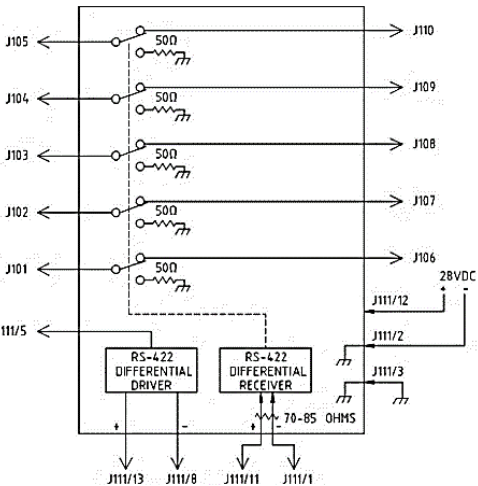
FEATURES

- Frequency Range: 500 – 2000 MHz
- RF Switch Assembly: Five SPST Switches
- Control RS-422
- Phase Matched: $\pm 5^\circ$
- High Isolation: 70dB
- Amplitude Tracking: ± 0.1
- Blanking Function
- Reverse Polarity Protection



APPLICATIONS: MILITARY FIGHTER AIRCRAFT

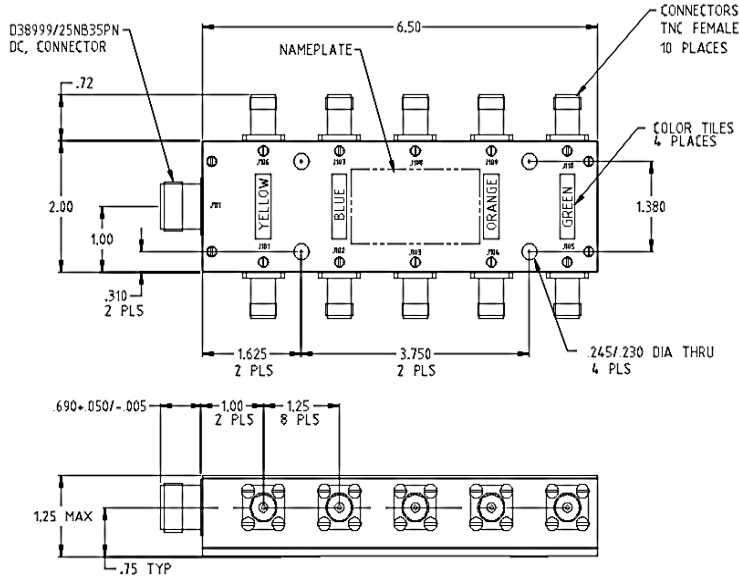
FUNCTIONAL BLOCK DIAGRAM



PRODUCT SPECIFICATION

Parameter	Min.	Typ.	Max.	Units	
Frequency	500		2000	MHz	
DC Current	+28V	135	200	mA	REVERSE POLARITY PROTECTED
Insertion Loss		0.68	1	dB	Channel to Channel
Amplitude Tracking		0.05	± 0.1	dB	
Phase Matching		± 1.0	± 5	DEG	
Isolation	70	82		dB	
VSWR	Thru	1.18:1	1.3:1		All Ports
	Termination	1.12:1	1.5:1		J101 - J105
	Reflective		∞		J106 - J110
Impedance		50		Ω	
Switching Speed		400	750	nsec	50% TTL to 90%/10% RF
Transition Time		± 20	± 100	nsec	50% TTL to 90%/10% RF
Intercept Point	2ND	89		dBm	
	3RD	48		dBm	
RF Power	Operate	+25	+28	dBm	
	No Switch Damage		+30	dBm	
Temperature	-54	+25	+110	$^\circ\text{C}$	TA

OUTLINE DRAWING



TYPICAL PERFORMANCE

