

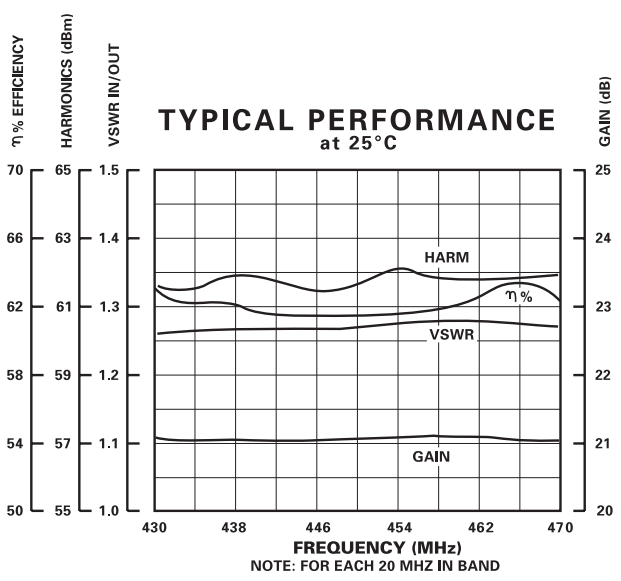
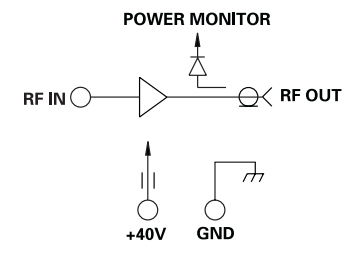
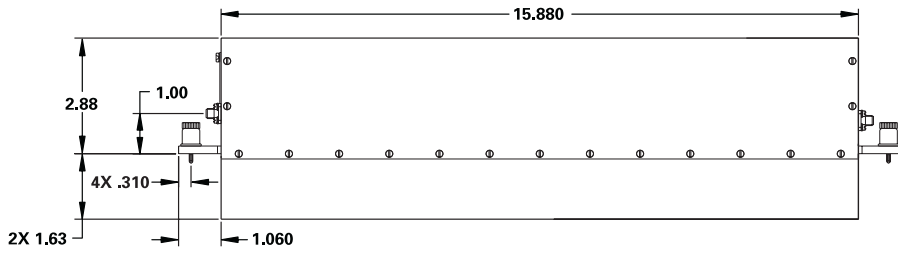
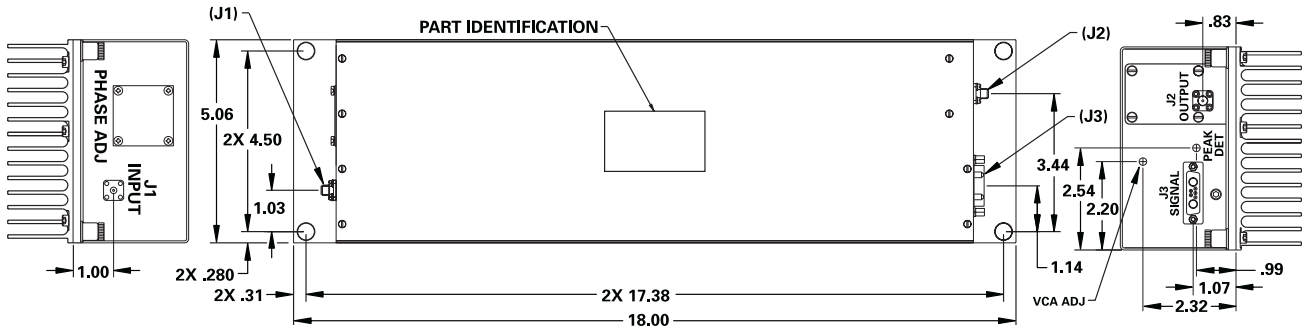
MODEL NUMBER CAMH9120

UHF High Power Amplifier

FEATURES

- 430-470 MHz
- Power Out +64 dBm
- Gain 21 dB
- 57% Efficiency
- 15% Duty Cycle

AMP



GUARANTEED PERFORMANCE

Parameter	Min	Typ	Max	Units	Conditions
Operating Frequency	430		470	MHz	Select 20 MHz in Band
RF Power	<i>Operate</i> +63	+64		dBm	
Gain	20	21	22	dB	Gain Can Be Adjusted
VSWR In/Out		1.3	1.4		
VSWR Withstand			∞:1		No Damage All Phases
Harmonics	// 60			dBc	
	/// 60			dBc	
Amplitude Tracking		±0.15	±0.25	DEG	Between Units
Phase Tracking		±1	±1.5	DEG	Between Units
Impedance		50		OHMS	
Duty Cycle			15	%	
Pulse Droop			0.05	dB	
Transition (Rise/Fall) Time			120	nSec	
DC Current			16.1	Amper	At +40 VDC Supply
Operating Temperature	-30	+25	+65	°C	TA