

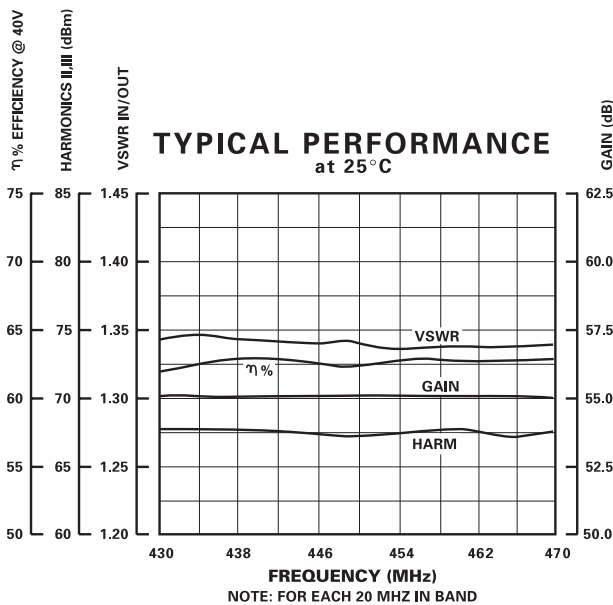
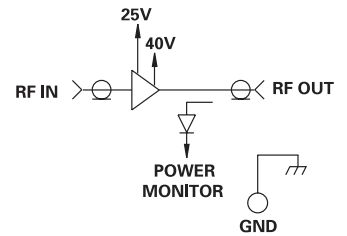
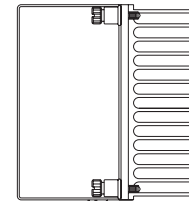
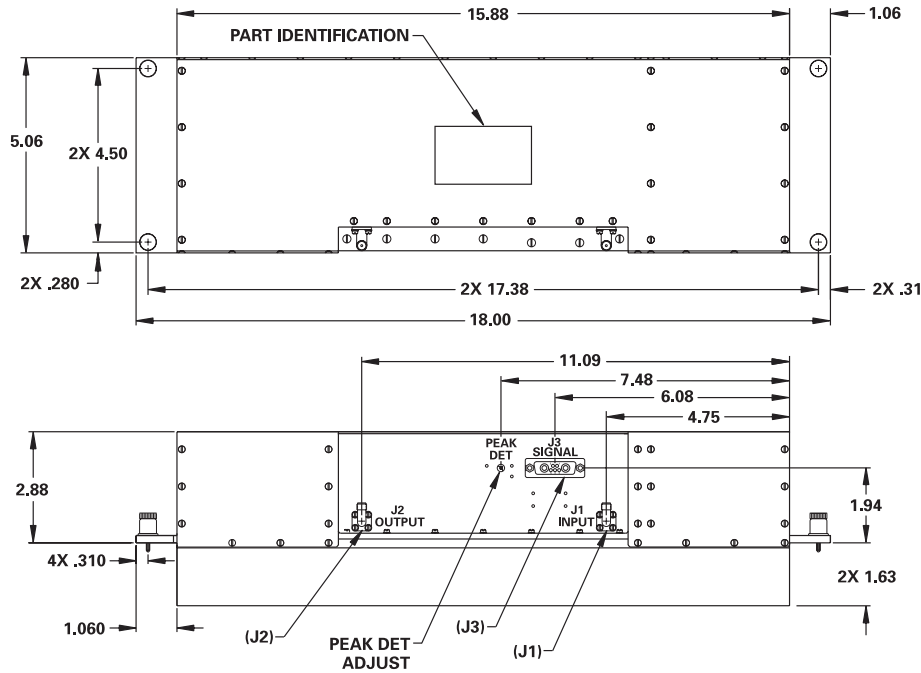
# MODEL NUMBER CAM09121

# UHF High Power Amplifier (Driver)

## FEATURES

- 430-470 MHz
- Power Out +57.8 dBm
- Gain 55 dB
- Efficiently 62% at 40V
- Duty Cycle 15%

## AMP



## GUARANTEED PERFORMANCE

Parameter	Min	Typ	Max	Units	Conditions	
Operating Frequency	430		470	MHz	Select 20 MHz in Band	
RF Power		Output	+57.6	+57.8	dBm	
		at 1 dB Compression				
Gain	54.5	55		dB	Gain can be Adjusted to 60 dB Min.	
VSWR In/Out		1.3	1.4			
Harmonics	II	65		dBc		
	III	65		dBc		
Amplitude Tracking		±0.2	±0.3	dB	Between Units	
Phase Tracking		±1.5	±2	DEG	Between Units	
Impedance		50		OHMS		
Duty Cycle			15	%		
Pulse Droop			0.05	dB		
Transition (Rise/Fall) Time		80		nSec		
DC Current			4	Amp	At +40 VDC Supply	
			2.7	Amp	At +25 VDC Supply	
Operating Temperature	-20	+25	+65	°C	TA	