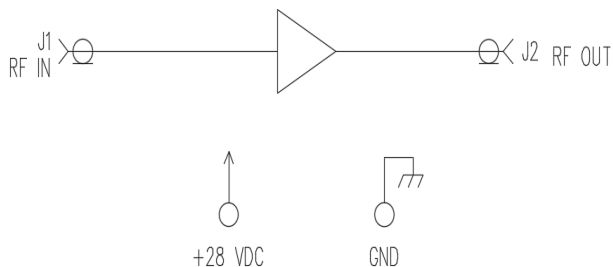


FEATURES

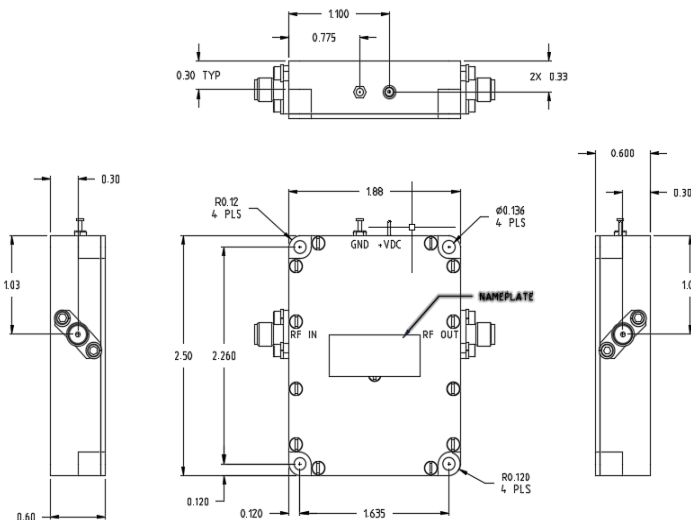
- Technology: GaN
- Frequency Range: 0.2-2.0 GHz
- Output Power: 15W Min
- Power Gain: 15 dB Typical
- Power Gain Flatness: ± 1.0 dB
- PAE: 50% Typical
- Input Survivability: +33dBm
- DC Input: +28VDC
- RF Connectors: Replaceable SMA
- Drop-in Package

APPLICATIONS: General Broadband Amplifier

FUNCTIONAL BLOCK DIAGRAM



OUTLINE DRAWING



PRODUCT SPECIFICATION

Parameter	Min.	Typ.	Max.	Units	Notes
Frequency	0.2		2.0	GHz	
Output Power	42	42.5		dBm	
Power Gain	12	12.5		dB	
Small Signal Gain	15	16		dB	
S.S. Gain Flatness		± 0.5	± 1.0	dB	
PAE	45	50		%	
VSWR (Input)		1.3:1	2:1		
VSWR (Output)		1.5:1	2:1		
Harmonic (2 nd)	-35	-40		dBc	
Impedance		50		Ω	
Input Power		+27.0	+30	dBm	
RF Input Max			+33	dBm	
DC Voltage		+28	+32	V	Test/+28V
DC Current		4.0	5	A	@ +28V
RF Interface	Replaceable SMA (F)				Pin/Drop-in
Dimensions	1.88"x2.50"x0.60"			inch	
Operating Temp	-40	+25	+85	$^{\circ}$ C	Base Plate

TYPICAL PERFORMANCE

