

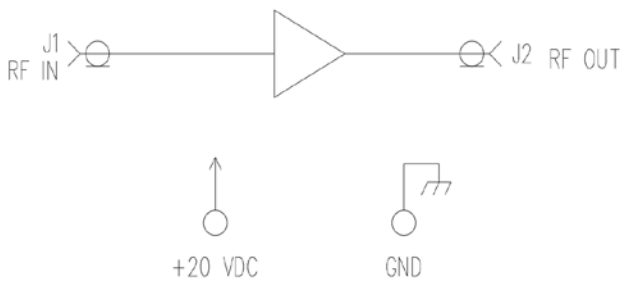
### FEATURES

- Technology: GaAs FET
- Frequency Range: 0.02-0.50 GHz
- Output  $P_{1dB}$  Power: 1.2W Min
- Output  $P_{SAT}$  Power: 1.5W Min
- High IP2: 65 dBm
- High IP3: 46dBm
- Small Signal Gain: 25.5 dB Typical
- S.S. Gain Flatness:  $\pm 1.0$ dB
- Noise Figure: 4.0 Typical
- DC Input: +20VDC Typ.
- Interface: SMA/Fed Thru

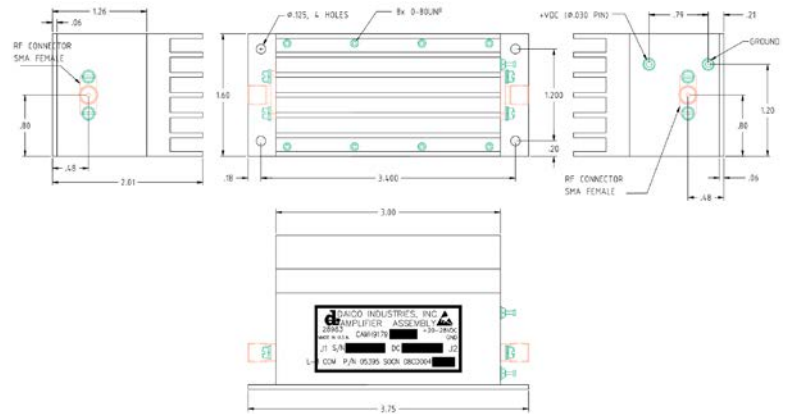


**APPLICATIONS:** Broadband Linear Amplifier

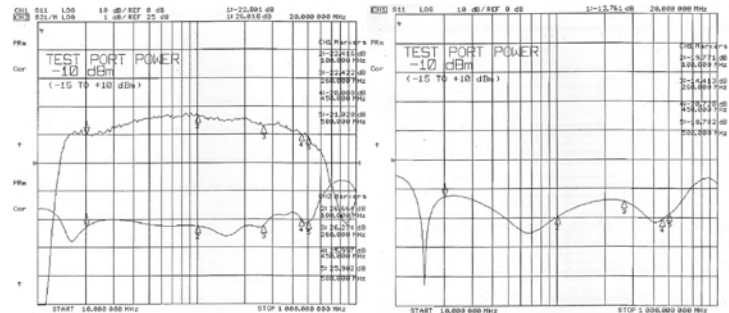
### FUNCTIONAL BLOCK DIAGRAM



### OUTLINE DRAWING



### TYPICAL PERFORMANCE

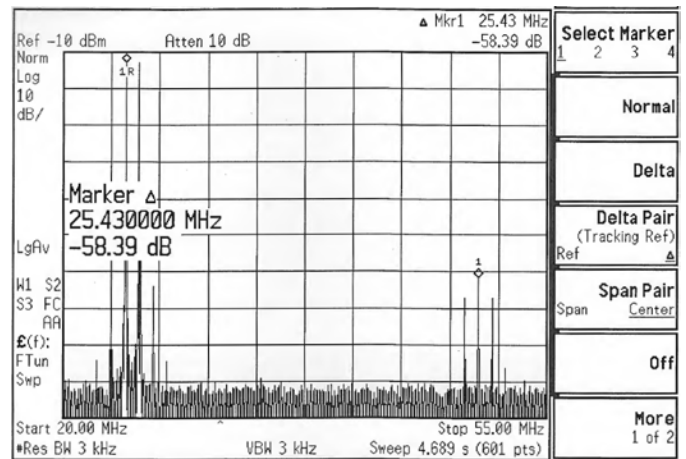


S11 VSWR and S21 Gain

S22 Output VSWR

### PRODUCT SPECIFICATION

Parameter	Min.	Typ.	Max.	Units	Notes
Frequency	0.02		0.50	GHz	
Output $P_{1dB}$ Power	30	31.5		dBm	
Output IP <sub>2</sub>	46			dBm	
Output IP <sub>3</sub>	65				
Small Signal Gain	24	25.5	27	dB	
S.S. Gain Flatness		$\pm 0.75$	$\pm 1.0$	dB	
Noise Figure		4.0	5.0	dB	
PAE	20	25		%	@ P1dB
VSWR (Input)		1.3:1	1.5:1		
VSWR (Output)		1.5:1	2:1		
Impedance		50		$\Omega$	
DC Voltage		+20		V	
DC Current (+20V)		750	820	mA	CW
Dimensions	3.75"x1.60"x2.01"			Inch	
Operating Temp	0	+25	+85	$^{\circ}$ C	Base



IMD<sub>2</sub> and IMD<sub>3</sub> at 20dBm at 25MHz