

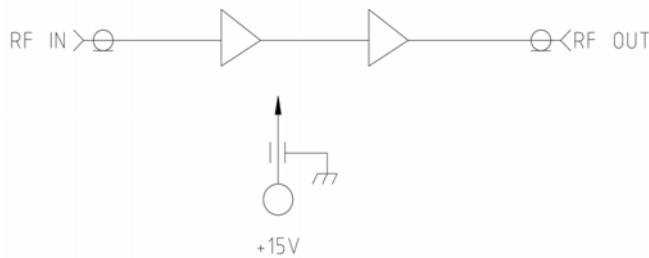
FEATURES

- Technology: GaAs
- Frequency Range: 6.0-12.0 GHz
- Output P_{1dB} Power: 13dBm
- Output P_{SAT} Power: 14dBm
- High IP2: 21 dBm
- High IP3: 31dBm
- Small Signal Gain: 19.5 dB Typical
- S.S. Gain Flatness: ± 0.25 dB Typical
- Reverse Isolation: 30dB Minimum
- Noise Figure: 2.0dB Maximum
- DC Input: +15V Nominal
- Interface: Removable SMA/Fed Thru

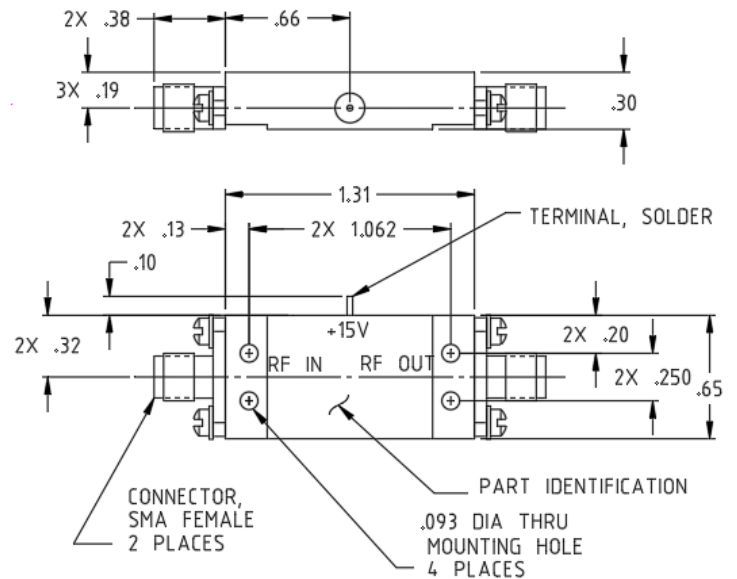


APPLICATIONS: X-Band Linear Noise Amplifier

FUNCTIONAL BLOCK DIAGRAM



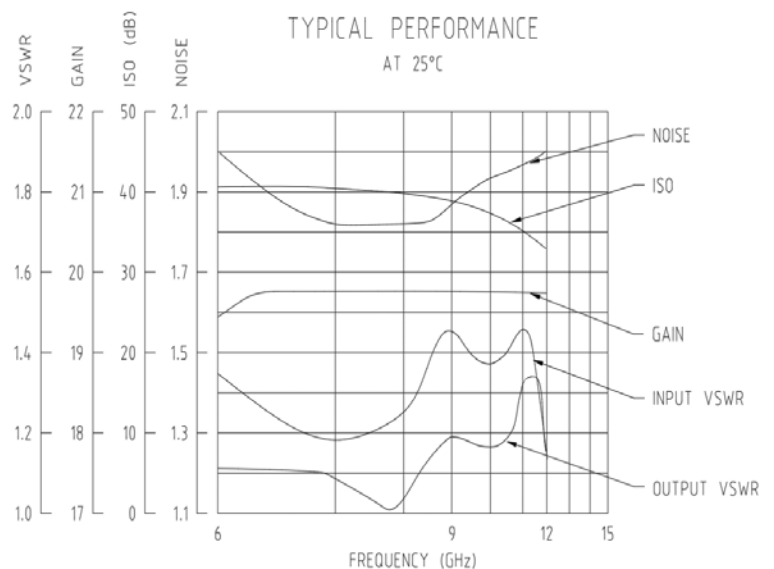
OUTLINE DRAWING



PRODUCT SPECIFICATION

Parameter	Min.	Typ.	Max.	Units	Notes
Frequency	6.0		12.0	GHz	
Output P_{1dB} Power		13		dBm	
Output P_{SAT} Power		14		dBm	
Output IP ₂		21		dBm	
Output IP ₃		31		dBm	
Small Signal Gain	18.5	19.5		dB	
S.S. Gain Flatness		± 0.25	± 0.50	dB	
NF		1.9	2.1	dB	
VSWR (Input)		1.5:1	1.8:1		
VSWR (Output)		1.5:1	1.8:1		
Reverse Isolation	30	33		dB	S12
Impedance		50		Ω	
DC Voltage	+12	+15		V	
DC Current (+15V)		0.10		A	CW
Dimensions	1.31x0.65x0.30			inch	
Operating Temp	-40	+25	+85	$^{\circ}$ C	Baseplate

TYPICAL PERFORMANCE



Typical Performances