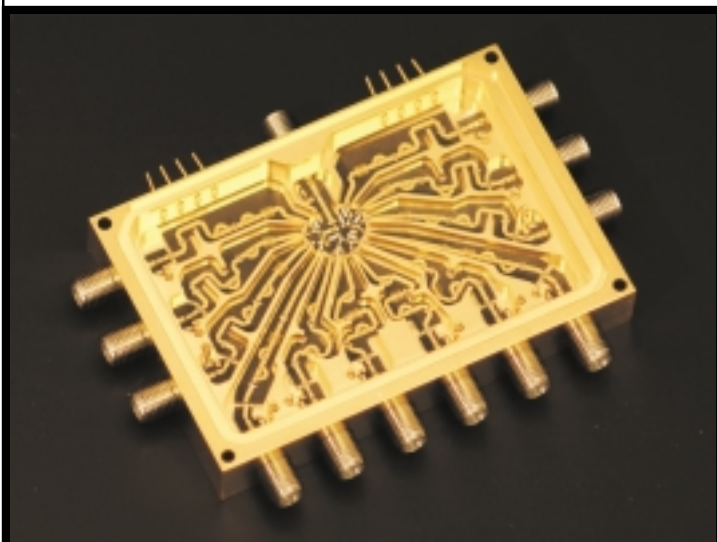


New Product

CSWX6322

SP12T RF SWITCH



- **RF Input Power: +35 dBm**
(internal termination and thru condition)
- **Operating Frequency: 8 GHz to 12 GHz**
- **Insertion Loss: 4.0 dB**
- **Isolation: 70 dB**
- **Phase Matched +/-5 Degrees Port-to-Port**
- **Matched Sets**