

FEATURES

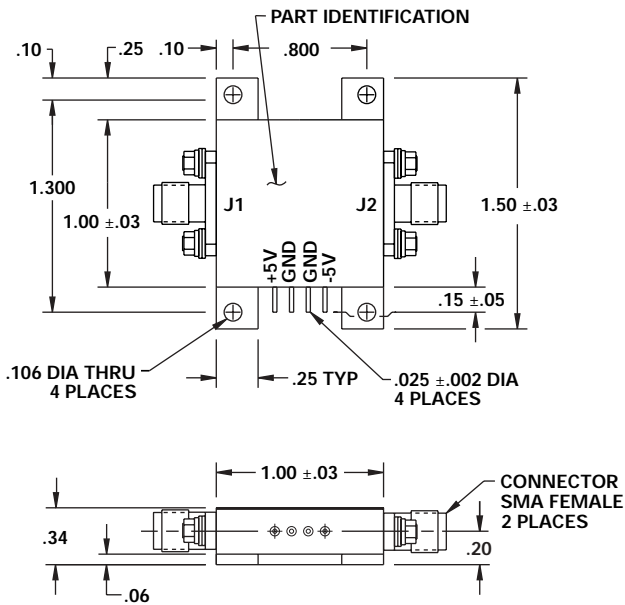
- .10 - 30 MHz
- +37 dBm Maximum Input Power
- +20 dBm 1 dB Compression
- 0.2 dB Insertion Loss
- +25 dBm Leakage
- Low Current Consumption
- Replaceable SMA Connectors



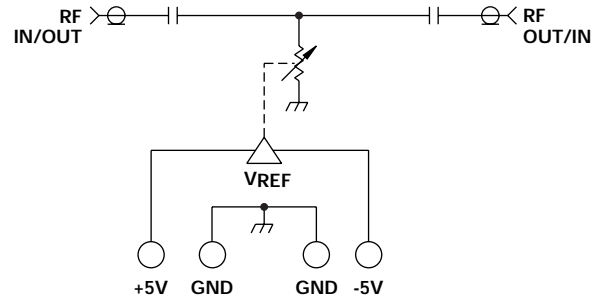
MODEL NO.
CLM06149

Limiter

HDI



.xx = .02
.xxx = .010



GUARANTEED PERFORMANCE

Parameter	Min	Typ	Max	Units	Conditions
Operating Frequency	.10		32	MHz	
DC Current		4	10	mA	At +5 VDC Supply
		3	10	mA	At -5 VDC Supply
Insertion Loss		0.2	0.35	dBm	At +5 dBm
Leakage		+25	+27	dBm	At Max Power
Spike Duration			50	µSec	
Recovery			500	µSec	
VSWR		1.1/1	1.4/1		At +5 dBm
Impedance		50		OHMS	
Intercept Points	2nd	+86		dBm	
	3rd	+49		dBm	
RF Power	Operate	+15	+20	dBm	1 dB Compression
	No Damage		+37	dBm	
Operating Temperature	-55	0	+85	°C	TA